

THE PACIFIC BASIN MUSIC FESTIVAL



E x p l o r e T h e W o r l d W i t h M u s i c


ASHLAND HIGH SCHOOL Concert Band, Orchestra and Choir Travis Moddison, Lauren Trolley and Nancy Martin, Directors 2019 PACIFIC BASIN MUSIC FESTIVAL March 22-28, 2019

As of: September 14, 2018
(itinerary details subject to change)

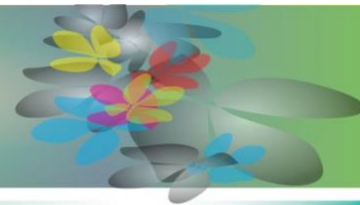
DAY ONE: Friday, March 22, 2019 – SAN FRANCISCO → HONOLULU

~2:00pm	Arrive at the San Francisco International Airport and check-in for your flight as a group. Move through security and on to your departure gate.
4:35pm	Depart for Honolulu on United flight #1509.
6:53pm	Arrive into Honolulu International Airport, collect your luggage, and enjoy a traditional Hawaiian Lei Greeting, load the coaches, and depart for the 'Alohilani Resort. Upon arrival at the hotel, you will be met by a World Projects representative who will assist you with checking in to your rooms.
Evening	Dinner on own. The rest of the evening is free to settle in after a long day of travel.

DAY TWO: Saturday, March 23, 2019 – HONOLULU (B,D) – Rehearsals

Early Morning	Enjoy breakfast on own with a \$15 cash handout. After breakfast, load the coaches and depart for Pearl Harbor. You will have the opportunity to tour the USS Arizona Memorial. <i>The USS Arizona Memorial is the final resting place for many of the battle ship's 1,177 crew members who lost their lives on December 7, 1941. The Memorial commemorates the site where World War II began for the United States.</i> After the visit, load the coaches and return to Waikiki.	
Afternoon	Lunch on own in the area. This afternoon, the CONCERT BAND and ORCHESTRA will each have a 60-minute <i>Rehearsal</i> at the 'Alohilani Resort.	
Evening	Meet as a group in the hotel lobby and walk to a local restaurant. Enjoy dinner as a group (possibly at Tikis Grill and Bar – TBC).	
8:30pm	The Director or a group representative will be required to attend a Directors' Orientation Meeting. This will give you a chance to meet the Festival staff and go over the schedule and any last minute questions you may have.	
9:00pm	We invite your directors to attend an informal 'Wine and Cheese' Reception (location TBC). This will give you a chance to meet the other directors and faculty at the Festival in a more social atmosphere.	
10:30pm	Reception concludes.	

THE PACIFIC BASIN MUSIC FESTIVAL



E x p l o r e T h e W o r l d W i t h M u s i c

DAY THREE: Sunday, March 24, 2019 – HONOLULU (B,D) – Exchange Rehearsals and Mass Choir Rehearsal

Morning Enjoy breakfast on own with a \$15 cash handout.
Today, the CONCERT BAND and ORCHESTRA will each participate in an *Exchange Rehearsal* with another festival ensemble. The exchange will be 90-minutes and offers the opportunity for ensembles to sight-read each other's repertoire.

CHOIR – Members of the Festival Mass Choir will meet at the 'Alohilani Resort and enjoy a 3-hour *Mass Choir Rehearsal*.

Afternoon Lunch on own in the area.
Enjoy free time to explore the area on own.
Afterwards all participants will have some free time to freshen up for tonight's Welcome Dinner and Dance.
7:15pm Arrive at the Sheraton Waikiki, meet in the foyer of the Kaua'I Ballroom on the 2nd floor. Seating allocations will be given to the group at the Director's Orientation.

7:30-10:00pm Attend this evening's Pacific Basin Music Festival Welcome Dinner Dance! Throughout the evening, enjoy a plated dinner, introductions from the Festival staff, and a chance to socialize with like-minded peers from around the world.

10:00pm Dinner dance concludes. Return to your hotel.



DAY FOUR: Monday, March 25, 2019 – HONOLULU (B,D) – Festival Workshops and Outdoor Performance

Morning Enjoy breakfast on own with a \$15 cash handout.
This morning the CONCERT BAND and ORCHESTRA will each enjoy a 60-minute *Workshop* at the festival hotel with a festival faculty member.

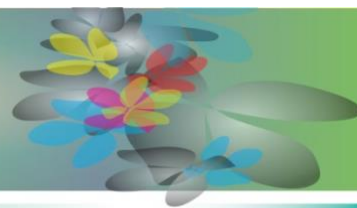
Afternoon Lunch on own in the area.
Meet in the hotel lobby with instruments and performance attire. Load the coaches for your outdoor performance.
Depart the hotel for Ala Moana Shopping Center, Kapiolani Bandstand or Aloha Tower Marketplace (venue TBC).
This afternoon, both ensembles will have an *Outdoor Performance!*

Ashland High School Concert Band and Orchestra will share a 45-minute slot in the PBMF Outdoor Concert Series.

Evening After your performances, enjoy dinner as a group at Ala Moana (possibly Bubba Gump's Shrimp Co. - TBC).
Afterwards, return to the hotel.



THE PACIFIC BASIN MUSIC FESTIVAL



E x p l o r e T h e W o r l d W i t h M u s i c

DAY FIVE: Tuesday, March 26, 2019 – HONOLULU(B) – Mass Choir Rehearsal &

Instrumental Adjudicated Performance

Morning Enjoy breakfast on own with a \$15 cash handout.
Depending on the number of participating ensembles, an afternoon instrumental concert might also be scheduled today. In the case that there is an afternoon concert, instrumental sound checks may also be scheduled for the morning.

Afternoon **CHOIR** – This morning, members of the mass choir will have their second **Mass Choir Rehearsal** at the festival hotel.

Enjoy some free time in Waikiki for lunch on own.

CONCERT BAND and **ORCHESTRA** will each have a 20-minute sound check in the Kaua’I Ballroom at the Sheraton Waikiki. A group photo will be taken at the sound check.

Evening Dinner on own.
Return to the Sheraton Waikiki for this evening’s concert.
Concert begins.

CONCERT BAND and **ORCHESTRA** - Each ensemble will have a **Performance** as part of the Festival Adjudicated Concert (20 minutes performance time, 5 minutes on/off time for each ensemble).

After the performances, you will be escorted to the foyer to store instruments and then return into the audience for the remainder of the concert.

After the concert, collect your instruments from the foyer and return to your rooms.



DAY SIX: Wednesday, March 27, 2019 – HONOLULU (B,L) – Festival Luau and Festival Mass Choir Performance

Morning Enjoy breakfast on own with a \$15 cash handout.
This morning is free to explore Waikiki.

Meet in the lobby and walk to the Waikiki Shell.

Noon Upon arrival, the festival photographer will take the mass Festival photograph.

Afterwards, enjoy a buffet lunch and some other fun luau activities (Polynesian dancing, etc.).

Afternoon Luau concludes. Return to the hotel.

The afternoon is free to explore the area and freshen up for this evening.

Dinner on own.

CHOIR – Festival Mass Choir participants will meet in the lobby in concert attire. Load the coach and transfer to Hawaii Theatre for a dress rehearsal.

CONCERT BAND and **ORCHESTRA** – Assemble in the hotel lobby and load the coaches.

Transfer to Hawaii Theatre.

Evening Attend (or possibly perform as part of) the Festival Command Performance Concert.

The **Festival Mass Choir** will perform as part of this concert.

Afterwards, load coaches and return to your hotel.

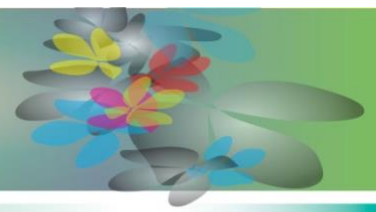


World Projects Headquarters: 601 First Street, Suite 200 • Benicia, CA 94510

Toll Free Tel: 1-800-922-3976 • Tel: (707) 556-5885 • Fax: (707) 556-5896

Web-site: www.world-projects.com

THE PACIFIC BASIN MUSIC FESTIVAL



E x p l o r e T h e W o r l d W i t h M u s i c

DAY SEVEN: Thursday, March 28, 2019 – HONOLULU → SAN FRANCISCO (B)

- 4:00am Check-out of the hotel and load the coaches.
4:15am Depart for Honolulu International Airport.
4:45am Check-in for your flight and move through security and on to your departure gate.
Enjoy breakfast on own with a \$15 cash handout.
6:55am Depart San Francisco on United Flight #372.
2:53pm Arrive into San Francisco International Airport and collect your luggage. Return to Ashland, OR via own transportation.

WELCOME HOME!!





ASHLAND HIGH SCHOOL Concert Band, Orchestra and Choir

Travis Moddison, Lauren Trolley and Nancy Martin, Directors

2019 PACIFIC BASIN MUSIC FESTIVAL

March 22-28, 2019

As of: September 14, 2018

PACKAGE INCLUSIONS

- ◆ ACTUAL round-trip economy class airfare on United Airlines (SFO-HNL-SFO) including estimated taxes/fuel surcharge (subject to change)
- ◆ Six (6) nights' hotel accommodation at 'Alohilani Resort (includes taxes and portage)
- ◆ One gratis ground package for every 20 paid participants based on double occupancy rate
- ◆ All required group coach transportation during the festival per itinerary (including airport transfers in Honolulu and a lei greeting)
- ◆ Six (6) \$15 cash handouts for breakfasts
- ◆ Three (3) dinners as a group including the Festival Welcome Dinner/Dance Party
- ◆ Festival Directors' Reception
- ◆ Festival Farewell Luau (includes buffet lunch)
- ◆ Workshop & performance arrangements for each ensemble as follows:
 - Concert Band & Orchestra
 - ◆ Festival performance and recorded adjudication comments (20 minutes) for each ensemble
 - ◆ PBMF Outdoor Series Performance at Ala Moana or similar (shared slot for Concert Band and Orchestra)
 - ◆ 60-minute workshop with festival faculty for each ensemble
 - ◆ Rehearsal exchange with another festival group for each ensemble
 - ◆ 60-minute rehearsal for each ensemble
 - Choir
 - ◆ Festival Mass Choir Participation
- ◆ Festival performance recording for each ensemble
- ◆ Visit to Pearl Harbor and USS Arizona Memorial
- ◆ Official Festival Souvenir Program, Festival T-Shirt and Festival Artist Pass Lanyard for each participant
- ◆ Festival Award Plaque
- ◆ Festival registration fees & access to all Festival concerts & events
- ◆ Official Festival photographer at adjudicated performance venue and luau
- ◆ One souvenir print of the Festival Luau photo (additional prints of the luau and group pictures can be ordered separately)
- ◆ Percussion and other equipment as noted: Conductor's Podium, Piano/Keyboard, Two (2) String Bases, Timpani (set of 4), Concert Bass Drum, Marimba, Xylophone, Vibraphone, Chimes (Tubular Bells), Orchestra Bells (Glockenspiel), Tam-Tam, stands

PACKAGE EXCLUSIONS

- ◆ Baggage fees
- ◆ Transportation to/from home airport
- ◆ Meals not mentioned in Inclusions
- ◆ Items of a personal nature (laundry, room service, internet connection fees, etc.)
- ◆ Additional sightseeing excursions
- ◆ Cancellation and Instrument Insurance

THE PACIFIC BASIN MUSIC FESTIVAL



E x p l o r e T h e W o r l d W i t h M u s i c

ASHLAND HIGH SCHOOL Concert Band, Orchestra and Choir
Travis Moddison, Lauren Trolley and Nancy Martin, Directors
2019 PACIFIC BASIN MUSIC FESTIVAL
March 22-28, 2019

As of: September 14, 2018

GROUND PER PERSON CHARGES – based on a minimum of 70 paid travelers

Six (6) Night Package	Quad	Triple	Double	Single
‘Alohilani Resort	US \$2,118.00	US \$2,268.00	US \$2,568.00	US \$3,488.00

AIR REDUCTION: US \$740 per person

Notes:

- ◆ **Airfare:** ACTUAL airfare has been included in this package from United Airlines. One Hundred (100) seats are being held for the group. Base fare is guaranteed. Taxes and fees are subject to change until ticketing. Any traveler taking an air reduction and traveling separately from the group is responsible for their own airport transfers in Honolulu if their arrival or departure does not coincide with the group’s arranged travel times.
- ◆ **Baggage Fees:** Baggage fees are set by United Airlines. United Airlines currently (as of September 13, 2018) charges \$30 for the first checked bag (\$60 roundtrip) and \$40 for the second checked bag (\$80 roundtrip), provided each bag is less than 50 lbs. and has a maximum dimension of 62 linear inches. Ashland High School will be responsible for all baggage fees. Fees are to be paid at the airport when the group checks in.
- ◆ **Costs:** Costs represented above are based on 2019 festival rates.
- ◆ **Quad / Triple Rooms:** Quad occupancy is four (4) people per room / two (2) beds per room and triple occupancy is three (3) people per room / two (2) beds per room – sharing beds will be necessary.
- ◆ **Payments:** All payments must be made by check, bank check, wire transfer or cash – credit cards will not be accepted. Costs are in US dollars, and payments must be made in US dollars.
- ◆ **Student Protection Plan:** World Projects will purchase a Student Protection Plan (post departure) for all travelers. The director will be sent details about the plan.
- ◆ **Gratis:** Gratis is based on Double Occupancy Price.
- ◆ **Required Forms:** All travelers will be required to submit signed liability waivers and medical authorizations forms as issued by World Projects to participate in the festival.
- ◆ **Numbers:** World Projects reserves the right to recost the tour should the number of travelers fall above or below the numbers shown above.
- ◆ **Agreement:** Once this tour has been deposited on, World Projects will require the group leader to sign a Performance Agreement which outlines the terms and conditions including tour costs, inclusions/exclusions and payment and cancellation schedule.

PAYMENT AND CANCELLATION SCHEDULE

Date	Payment / Type	Cancellation / Refund
RECEIVED	US \$3,000 group deposit	Non-refundable
RECEIVED (100)	US \$100 per person air deposit	100% refundable to Dec. 14, 2018
November 1, 2018	US \$350 per person	50% refundable to December 15, 2018
February 1, 2019	Balance in Full	50% refundable to February 15, 2019

World Projects Headquarters: 601 First Street, Suite 200 • Benicia, CA 94510
Toll Free Tel: 1-800-922-3976 • Tel: (707) 556-5885 • Fax: (707) 556-5896
Web-site: www.world-projects.com