

# Enrollment Trends and Forecasts

**Ashland School District**

**April 24, 2017**



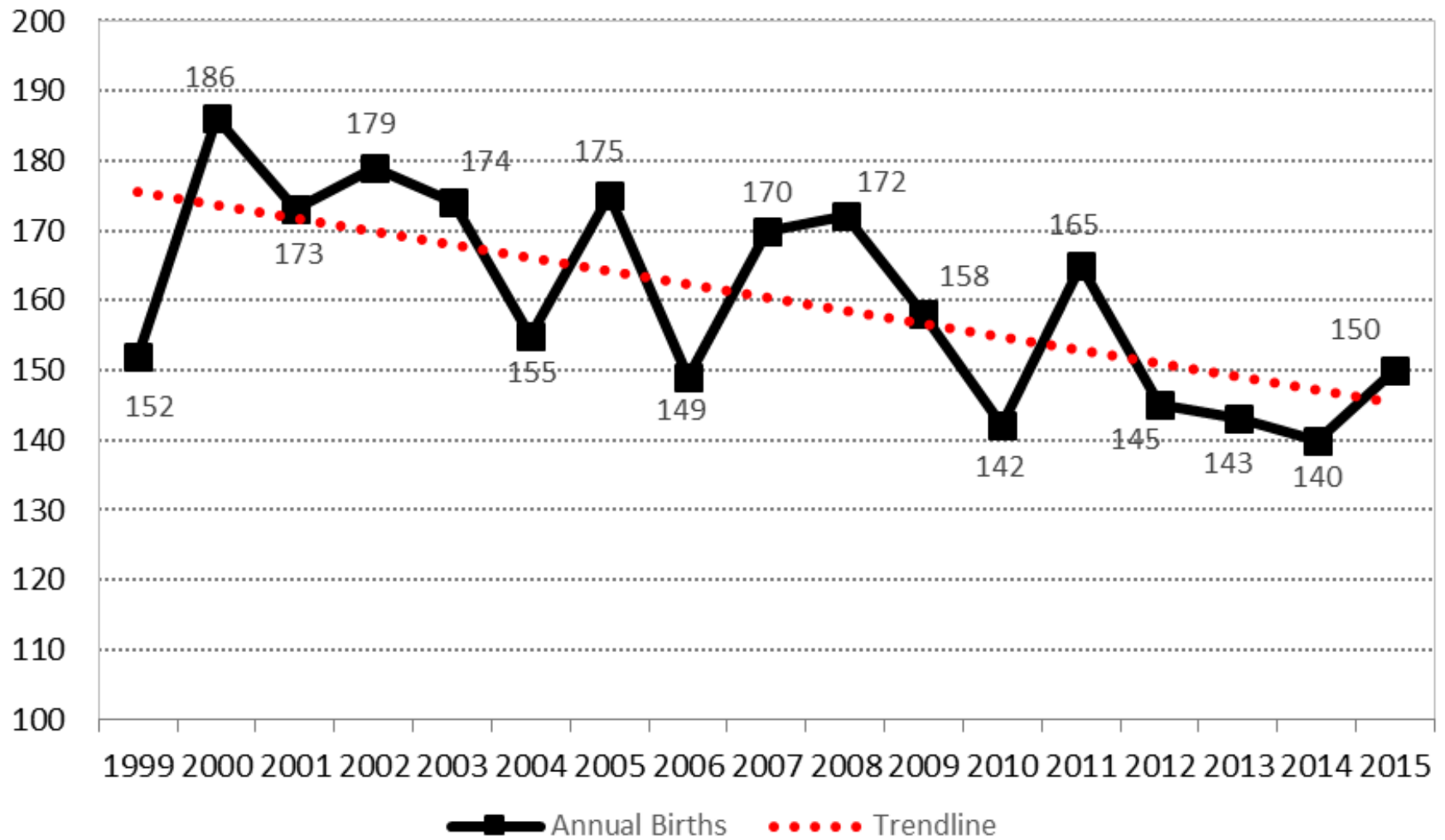
Charles Rynerson and Scott Stewart  
Population Research Center  
College of Urban and Public Affairs



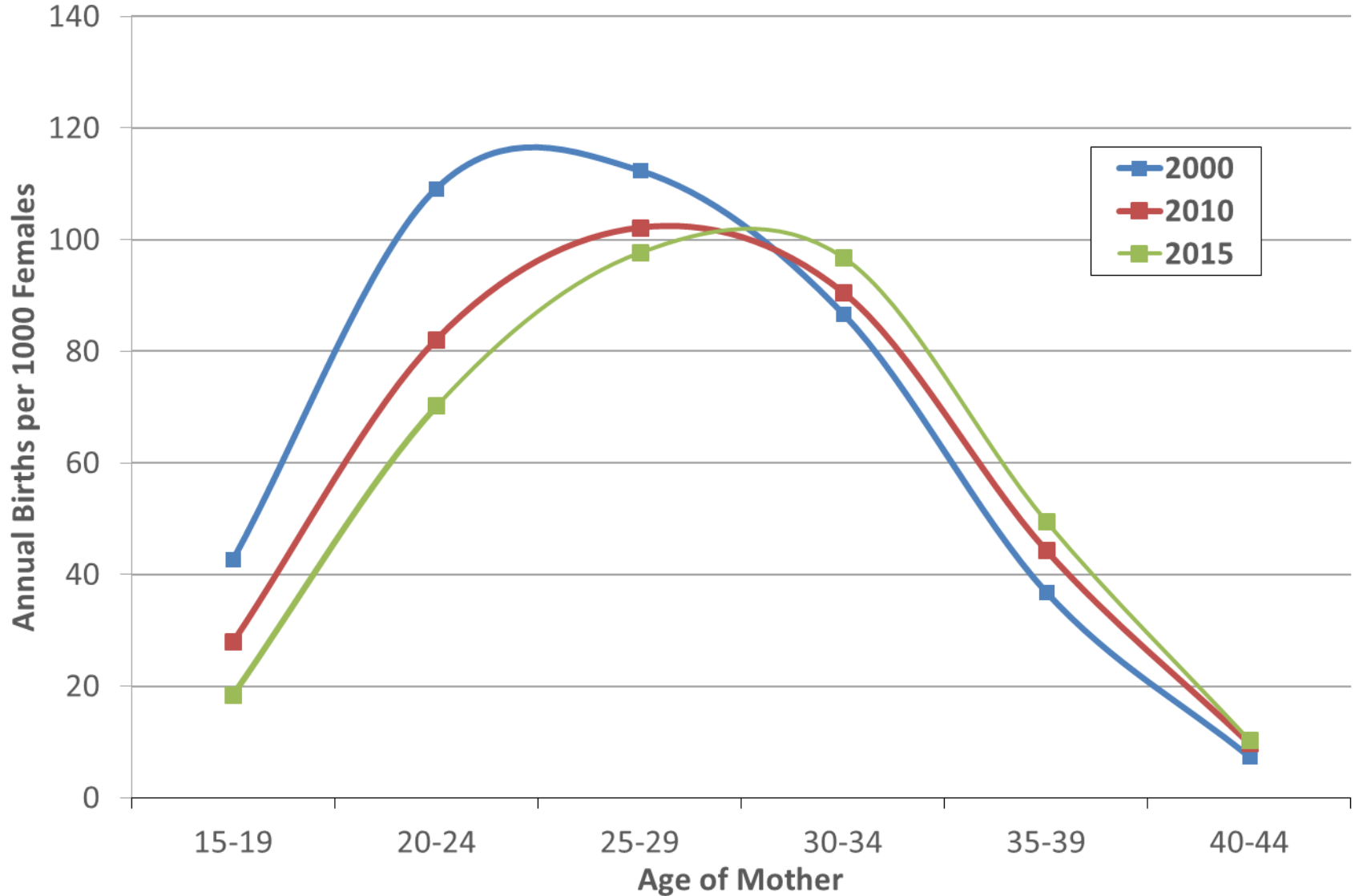
# Selected Comparisons with Neighboring Districts

	Ashland	Central Point	Medford	Phoenix-Talent
Median Household Income <b>2011-15*</b>	\$46,112	\$49,011	\$43,845	\$37,455
Median Household Income - MOE (+/-)	\$3,387	\$3,667	\$1,569	\$2,715
Median Value of Home <b>2011-15*</b>	\$347,200	\$195,200	\$214,100	\$198,400
Median Value of Home - MOE (+/-)	\$15,638	\$8,147	\$6,360	\$13,662
Median Home Value to Median Income Ratio	7.5	4.0	4.9	5.3
*U.S. Census Bureau, 2011-2015 American Community Survey 5 Year Estimates. In 2015 Inflation Adjusted Dollars. ACS data needs to be interpreted along with margins of error (MOE).				
	Ashland	Central Point	Medford	Phoenix-Talent
Age 25+ with a bachelor's degree or higher	55.1%	18.3%	23.7%	29.8%
MOE (+/-)	2.5%	2.1%	1.5%	2.6%
Percent of Population Under 18 Years	16.6%	23.2%	22.9%	19.1%
MOE (+/-)	1.5%	1.3%	0.8%	2.3%
*U.S. Census Bureau, 2011-2015 American Community Survey 5 Year Estimates. ACS data needs to be interpreted along with margins of error (MOE).				

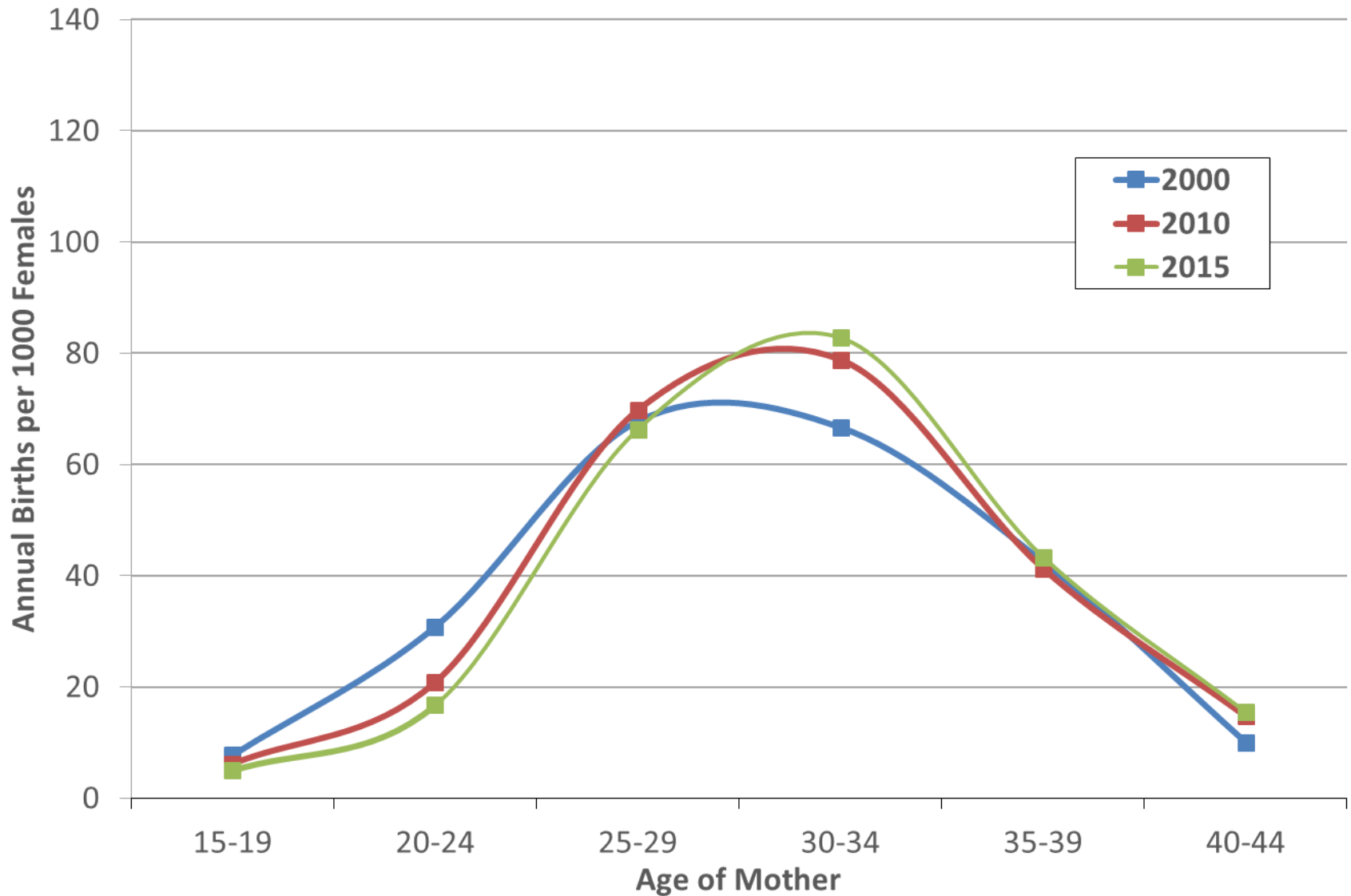
Chart 3  
Estimated Annual Births, 1999 to 2015  
Ashland School District



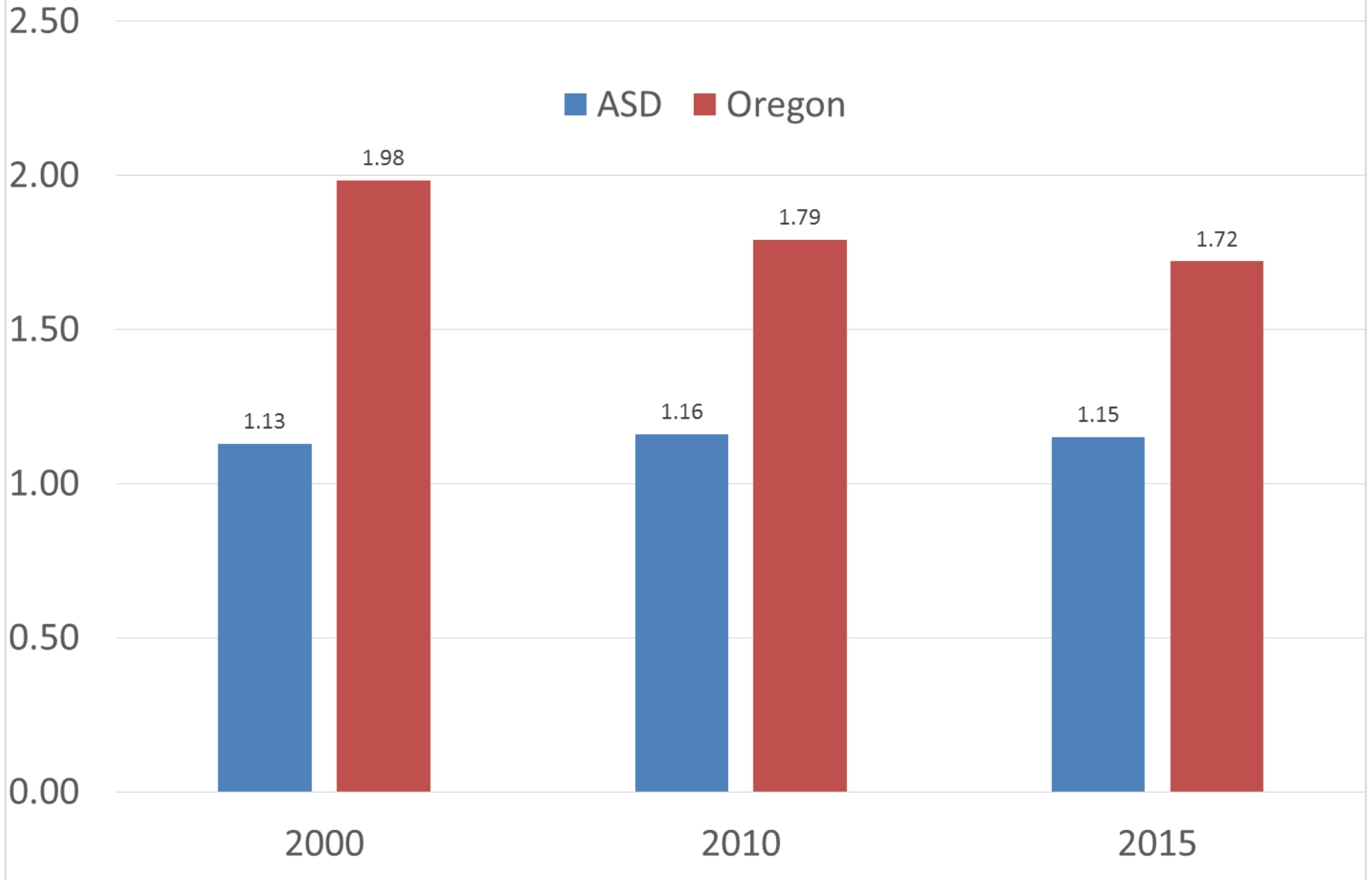
### Age-Specific Fertility Rates, 2000, 2010, and 2015 State of Oregon



### Age-Specific Fertility Rates, 2000, 2010, and 2015 Ashland School District

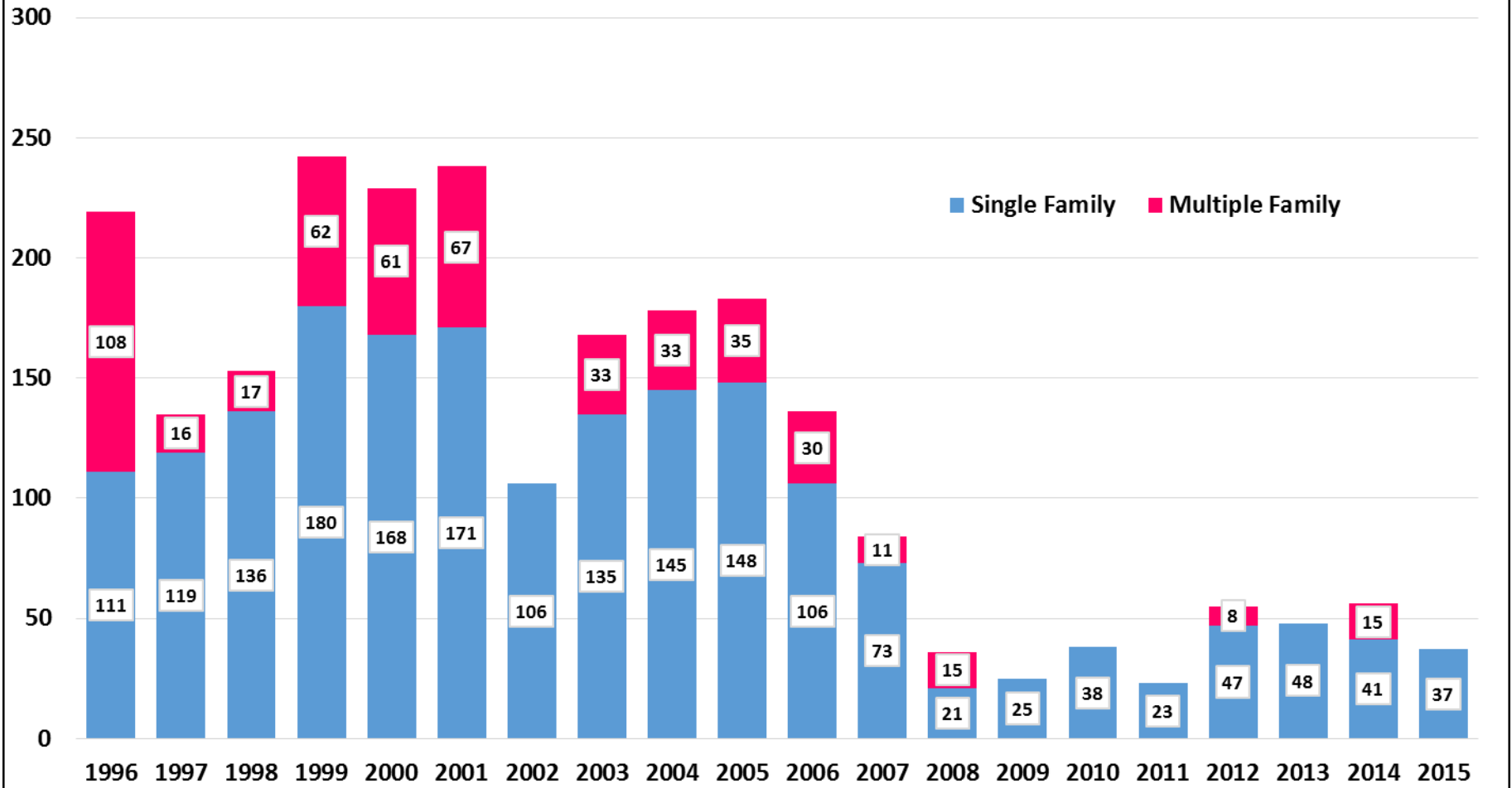


## Total Fertility Rates, 2000, 2010 and 2015

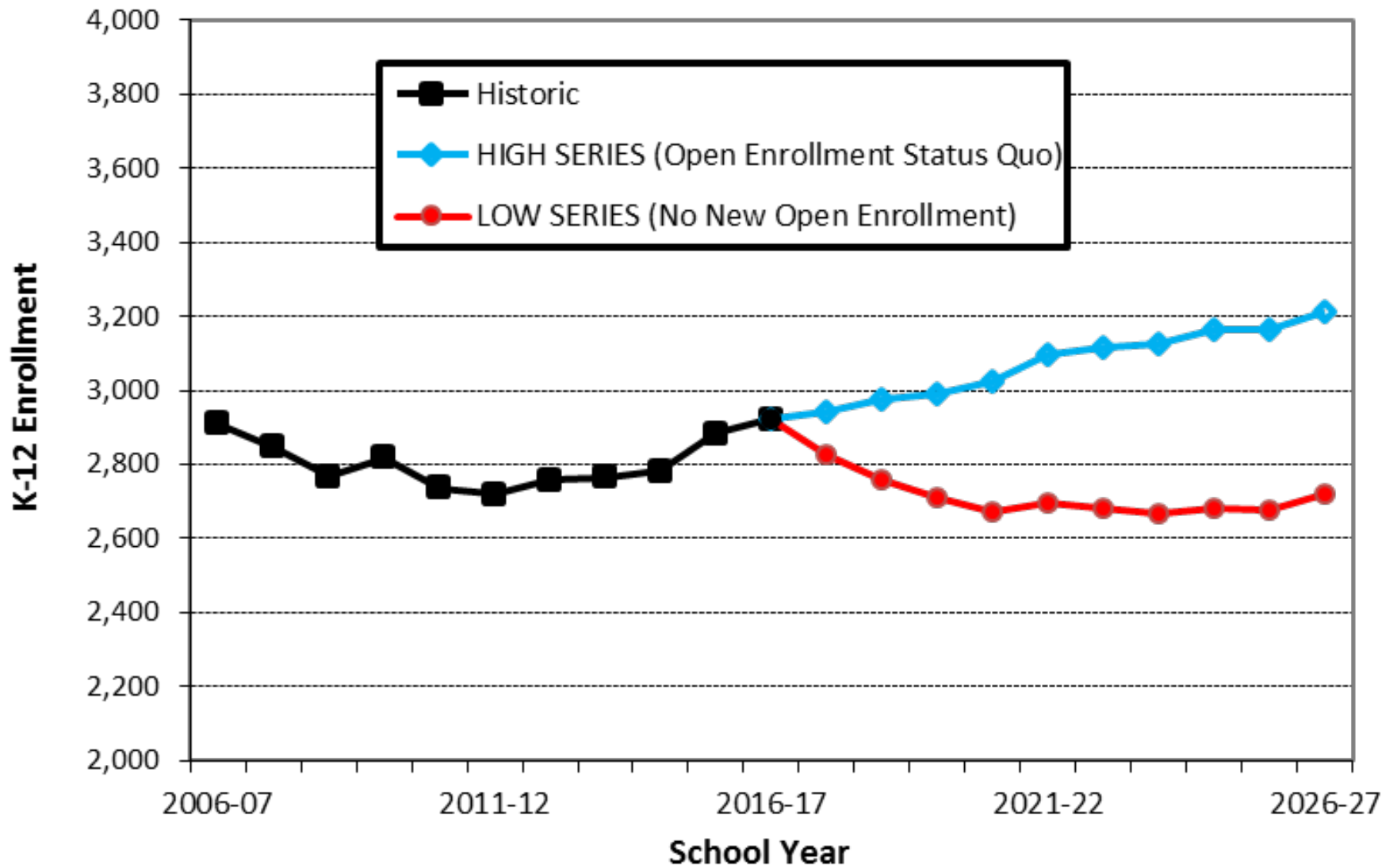


## Chart 2

### Housing Units Authorized by Building Permits: City of Ashland

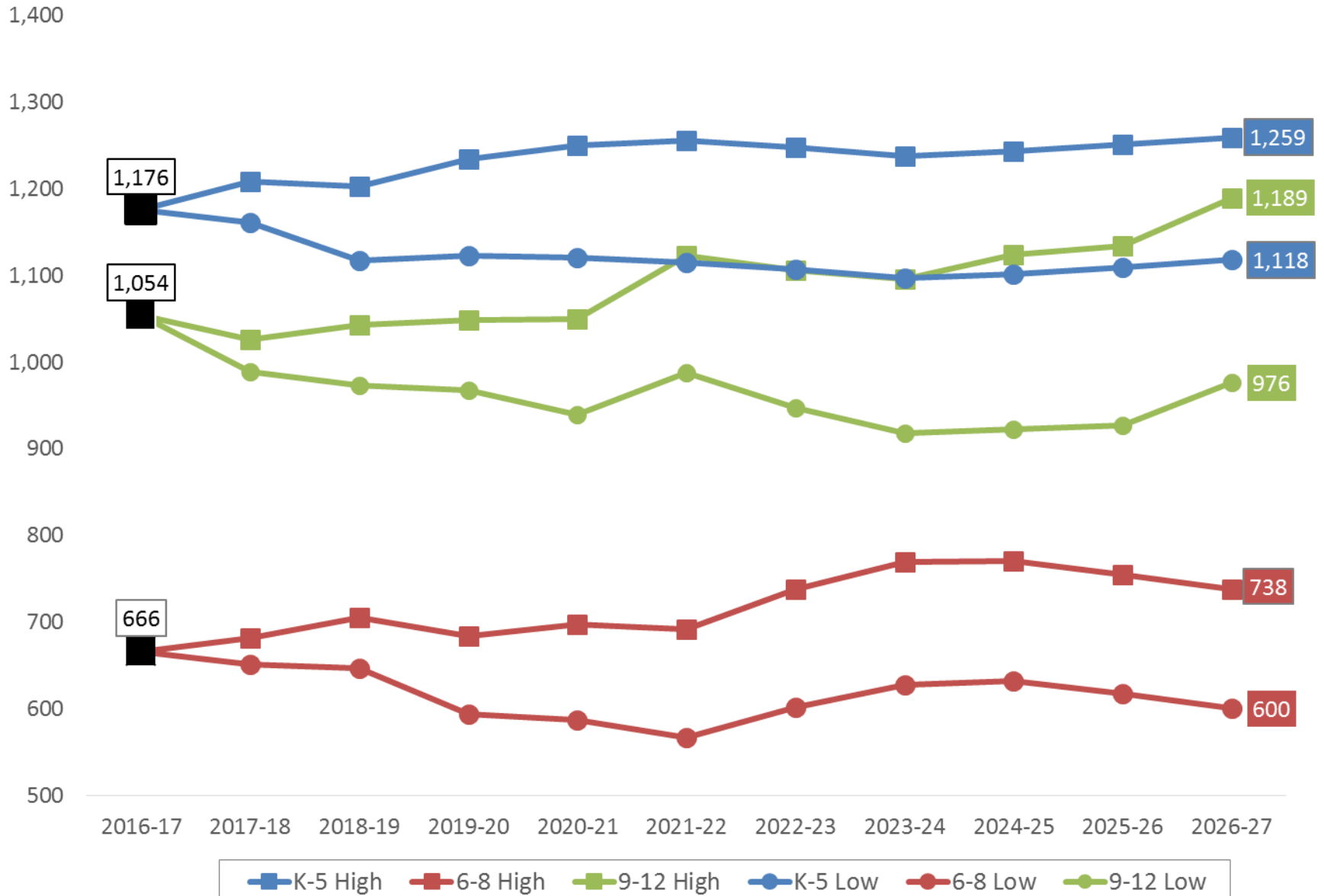


**Chart 1**  
**ASD Enrollment History and Forecasts, 2006-07 to 2026-27**



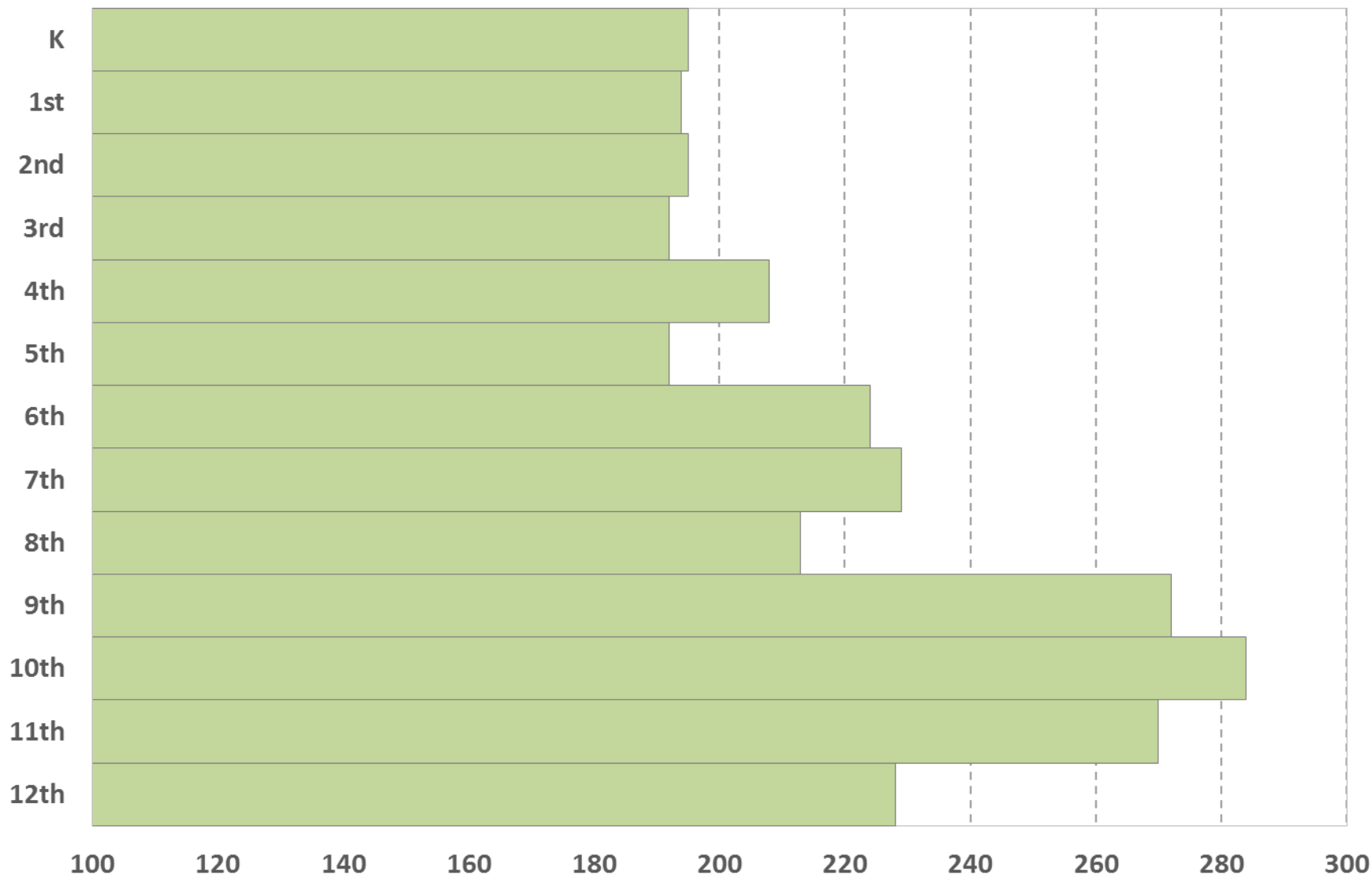


## ASD Enrollment Forecasts by School Level, 2017-18 to 2026-27

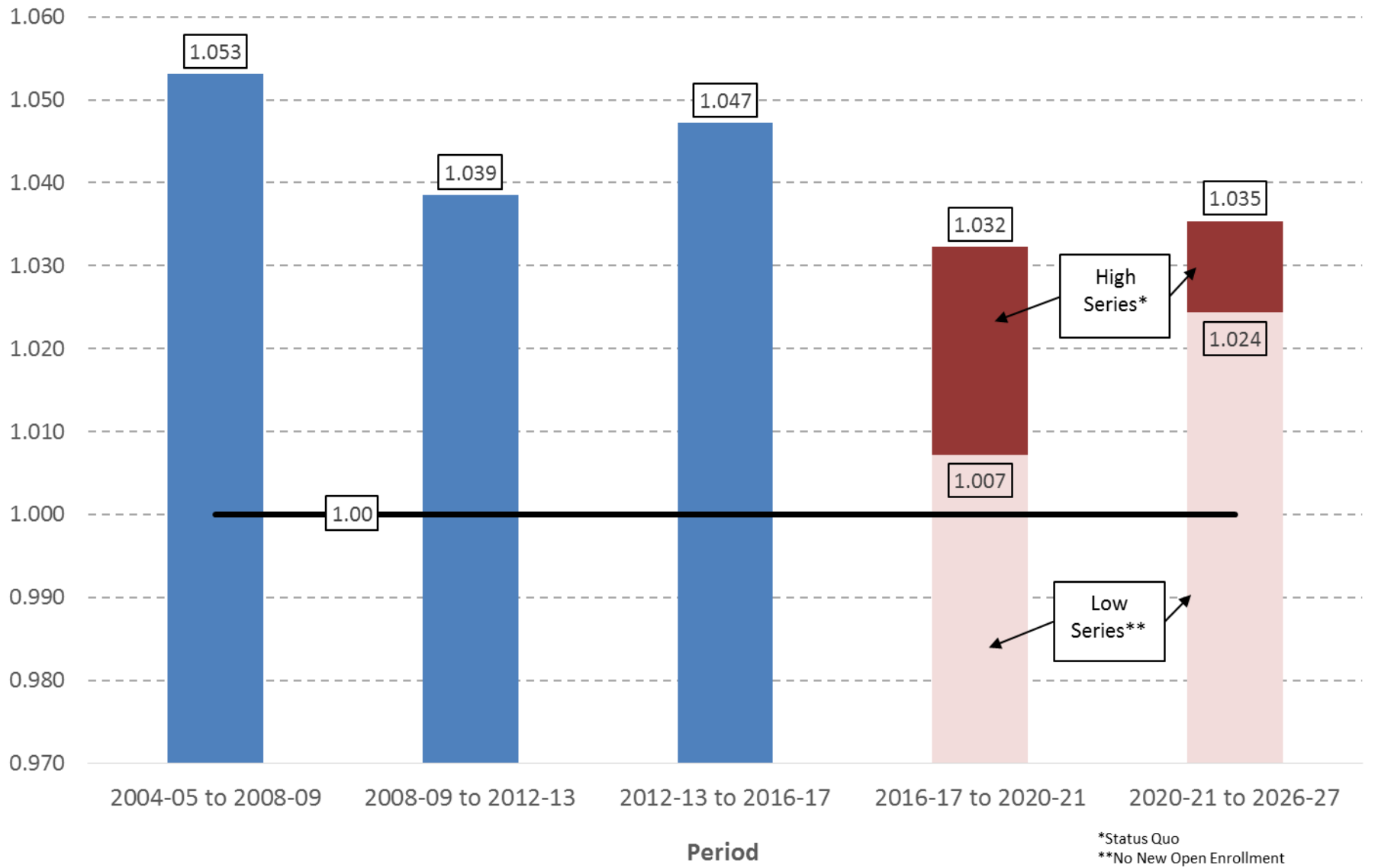




## 2016-17 Enrollment by Grade Level



# ASD Average Elementary Grade Progression Rates (Grades 2-5 enrollment to previous year grades 1-4 enrollment)



# Enrollment Trends and Forecasts

**Ashland School District**

**April 24, 2017**



Charles Rynerson and Scott Stewart  
Population Research Center  
College of Urban and Public Affairs

